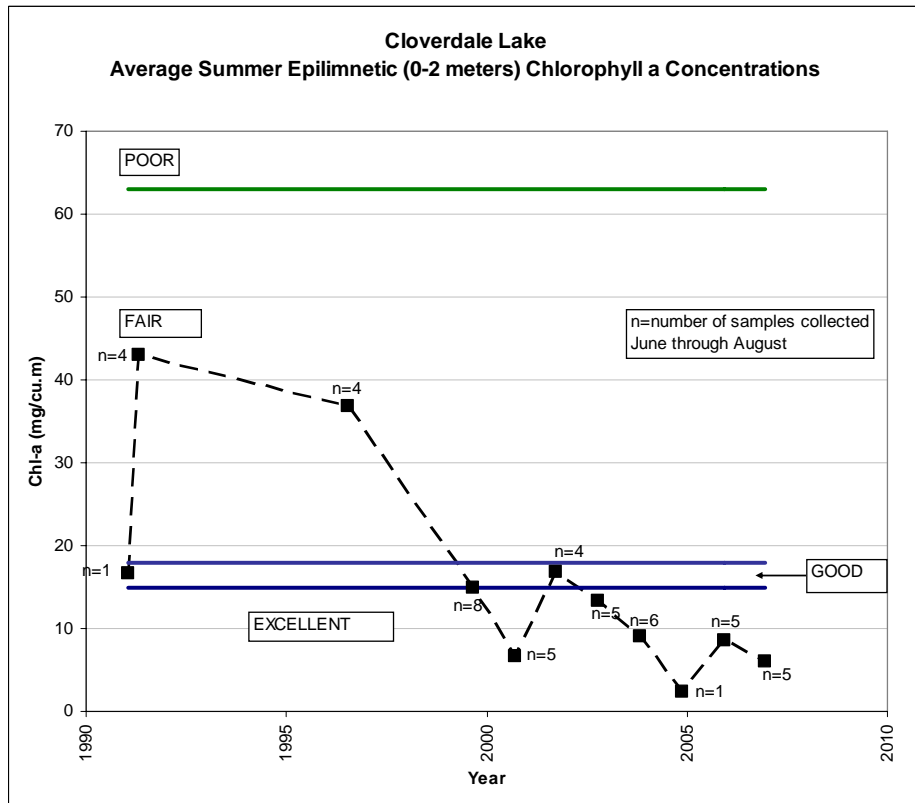
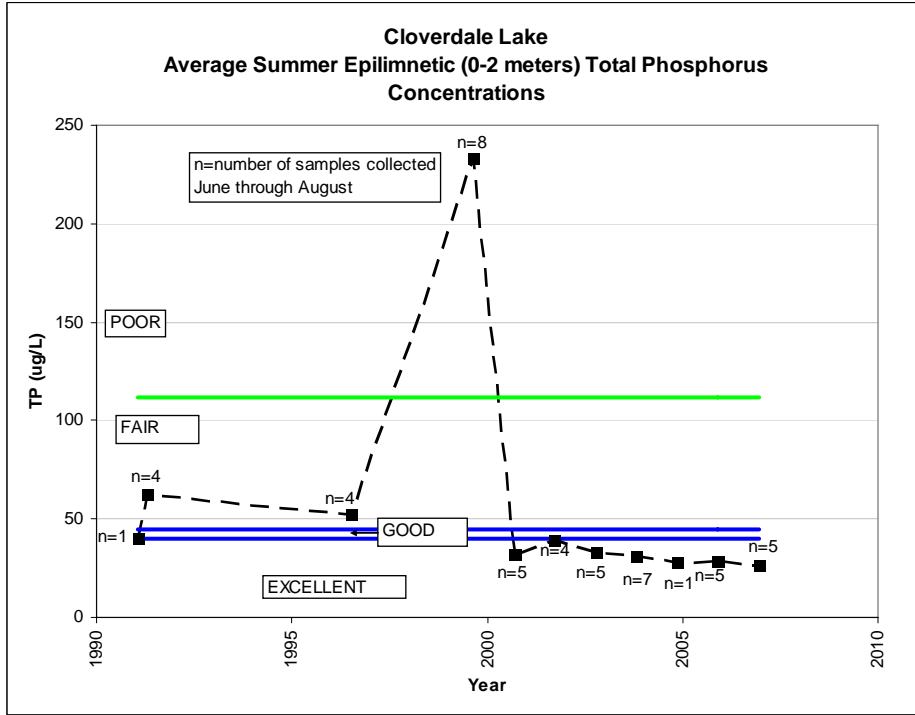
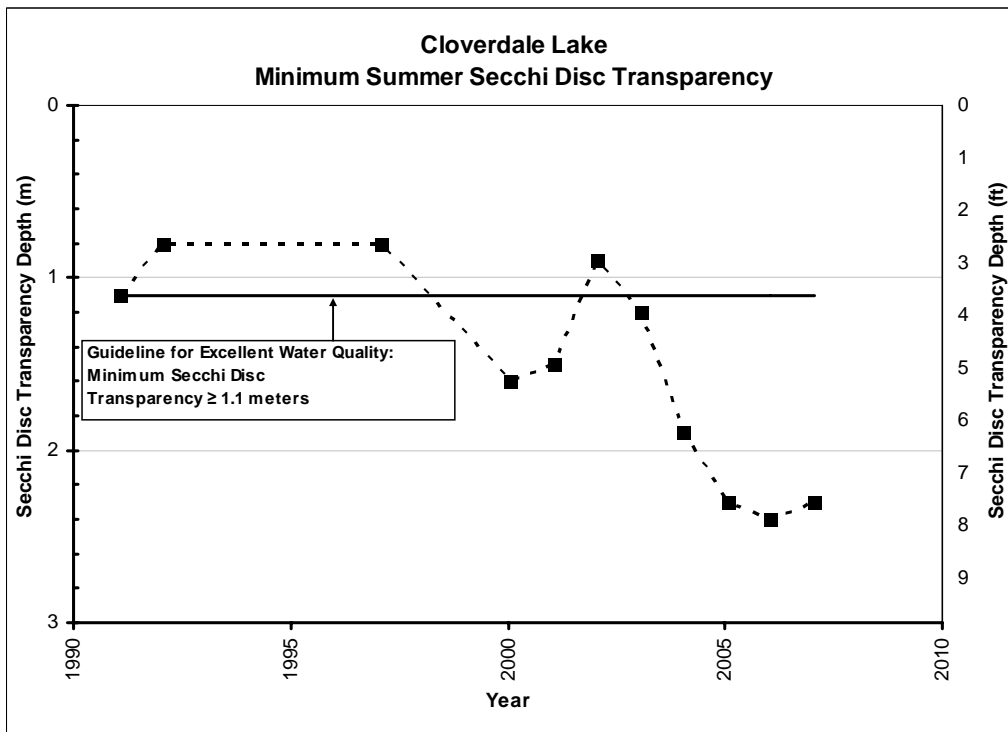
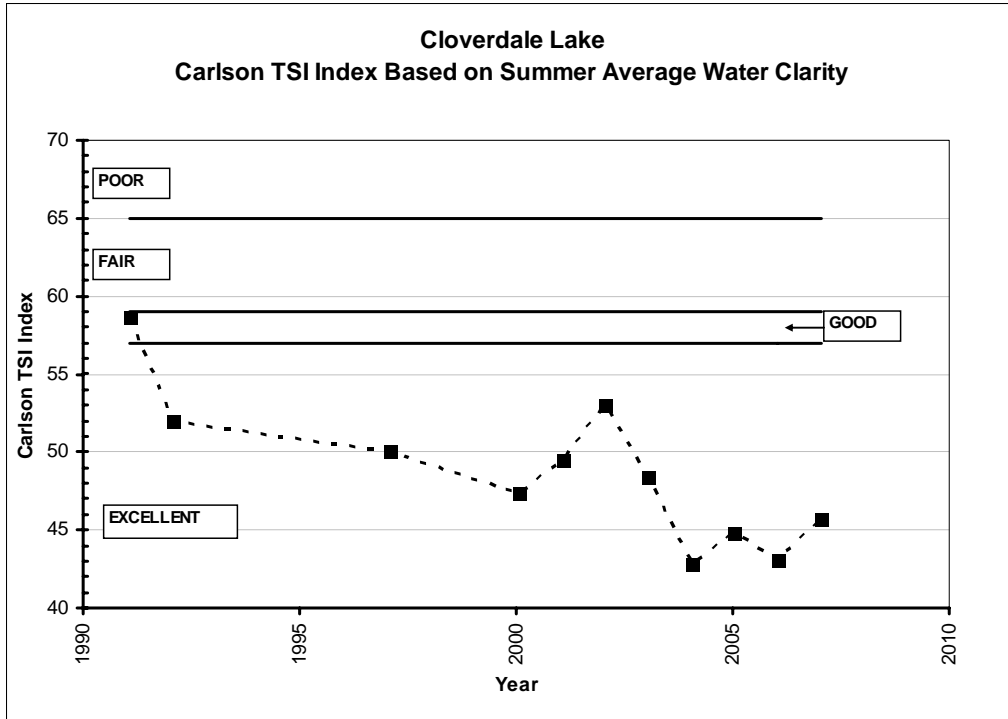


CLOVERDALE LAKE  
SUMMER AVERAGE WATER CLARITY  
Valley Branch Watershed District

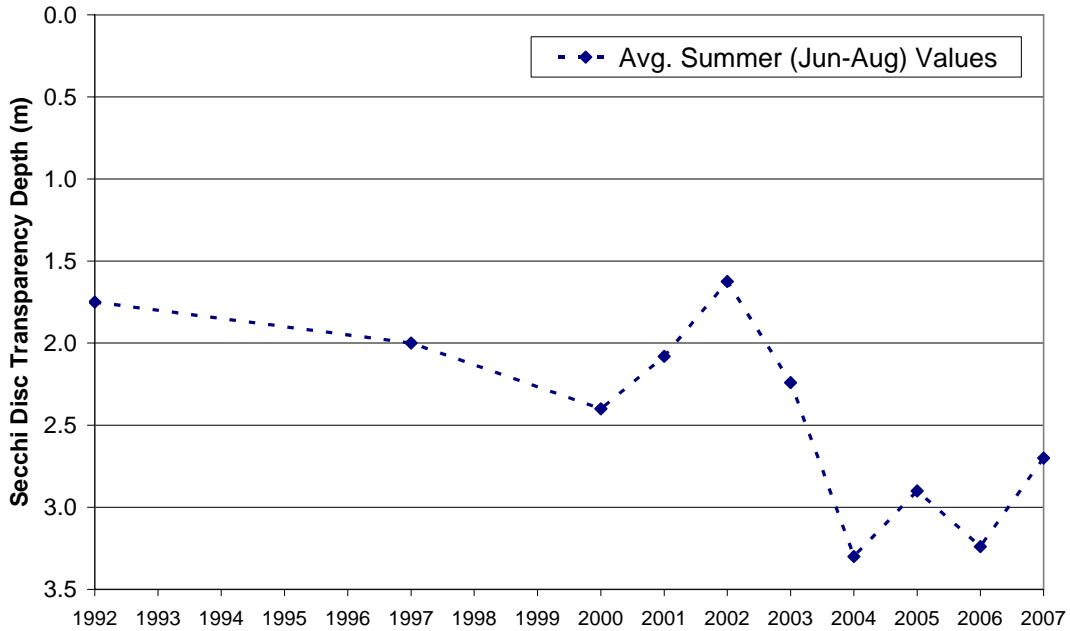


**CLOVERDALE LAKE  
HISTORIC WATER QUALITY DATA  
Valley Branch Watershed District**



**CLOVERDALE LAKE  
HISTORIC WATER QUALITY DATA  
Valley Branch Watershed District**

**Cloverdale Lake  
Secchi Disc Transparency Depths**



**Mann-Kendall/Sen's Slope Trend Test  
(Test Period – 1998 to 2007)**

Confidence Level	Test Statistic = 10	
	Test	Significance
99%	10 < 21	Not Significant
95%	10 < 17	Not Significant
90%	10 < 15	Not Significant
80%	10 < 12	Not Significant
Sen's Slope	0.129 meters/year	

Notes:

1. Points shown in the graph are the summer average (June-August) Secchi disc transparency depths. Only years with a calculated summer average based on at least 4 measured values are plotted. At least 5 data points were required to complete the trend test.